

# Neil Jeffares, *Dictionary of pastellists before 1800*

## Online edition

### WIT, Jakob de

Amsterdam 19.XII.1695–12.XI.1754

Dutch painter of allegorical and mythological subjects. A pupil of Jacob van Hal, he was more influenced by the works of Van Dyck and Rubens which he studied in Antwerp, and on his return to Amsterdam in 1716 his painted ceilings with putti were much in demand from patrons such as Catharina Adriana Meerman de la Court. In a note on a painting in the Heineken sale catalogue (12.XII.1757 & seq., Lot 90), Remy commented “*Ses desseins aux trois craions, au pastel, à la plume, présentent un effet piquant & d’autant plus agréable, qu’ils sont faits avec beaucoup de facilité. Ses grands Ouvrages ne sont pas faits avec moins d’intelligence.*” His prolific output in various media included watercolour, etching and grisaille painting. A number of drawings are described as in coloured chalks (among them some portraits said to be in an Italianate style, influenced by Rosalba). Some seem to have the softness of fabricated pastel. They are not fully catalogued here. Among his pupils was Jacob Xavery (*q.v.*) who lived with him.

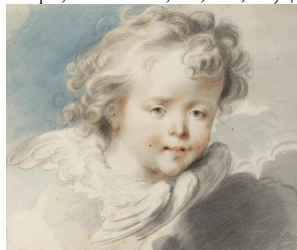
#### Bibliography

Bénézit; Immerzeel 1842, III, p. 240–43

#### Drawings in coloured chalks

J.802.101 Un ange, cr. clr, 23.6x22.5 (London, 3.IV.1995, £1035)

J.802.102 Head of an angel, black, red chlk, grey, blue wash, sd v “JdWit/1738” (Baron Hendrick van Slingelandt (1702–1759); desc.; Amsterdam, Sotheby’s, 14.XI.2006, Lot 158 repr., est. €10–15,000, €12,000) φ



J.802.104 Two seraphs among the clouds; & pendant: J.802.105 same, cr. clr/ppr, 38x43, s “JdWit”, one d 1733 (London, Sotheby’s, 9.VII.2008, Lot 84 repr., est. £10–15,000) φσ



J.802.108 Two seraphs, cr. clr/ppr, 33x45.3, s “JdWit/1748” (New York, Christie’s, 20.I.1997, Lot 234 repr., est. \$2–3,000, \$4830) φ

J.802.109 Christushoofd, pstl. Lit.: Immerzeel 1842, p. 242 n.r.

J.802.11 =?Christ, buste, pierre noire, reh. blanc, estompe, 23.6x21.2 (Louvre inv. MA 12629. Saint-Morys)

J.802.111 Tête de Christ, pstl (Cornelis Ploos van Amstel; vente p.m., Amsterdam, van der Schley, 3.III.1800 & seq., D/140)

J.802.112 Séraphins, pstl (J. A. Bennet; vente p.m., Leiden, sa maison, C. C. van der Hoek, 1.IV.1829 & seq., p. 127, no. 1)

J.802.113 Tête de Jésus, pstl (J. A. Bennet; vente p.m., Leiden, sa maison, C. C. van der Hoek, 1.IV.1829 & seq., p. 127, no. 4)

J.802.114 Cupid’s head, pstl, 23x31, s v “J. de Wit” (V. Winthrop Newman; New York, AAA, 8.V.1923, Lot 20, \$32; Philip Suval) φ



J.802.116 Seraph, pstl, chlk, wash, ink/ppr, 24.6x30 sd v “JdWit” (Joris van Glabbeek & Marlon Elfvering; Amsterdam, Christie’s, 14–16.XII.2010, Lot 659 repr., est. €1800–2200, €4000) φ



J.802.118 Homme barbu regardant le ciel, trois crayons, pstl/ppr, 19x23.5 (Bruxelles, Pierre Bergé, 4.X.2011, Lot 38 repr., attr., est. €3–4000) φ



J.802.12 Tête de femme, pstl (J. A. Bennet; vente p.m., Leiden, sa maison, C. C. van der Hoek, 1.IV.1829 & seq., p. 127, no. 1)

J.802.121 Tête de la Vierge, pstl (J. A. Bennet; vente p.m., Leiden, sa maison, C. C. van der Hoek, 1.IV.1829 & seq., p. 127, no. 5)