

Neil Jeffares, *Dictionary of pastellists before 1800*

Online edition

VERDIER, François

Paris 1651–20.vi.1730

Pupil and assistant of Charles Le Brun; *requ* 1678. In 1685 he married Antoinette Butay, niece of Suzanne Butay, Le Brun's wife; complex legal proceedings concerned the administration of his estate. In 1727 Antoinette was awarded a pension of 500 livres on account of the service of her deceased son Charles-François Verdier (born in 1688, with Charles Le Brun as godfather), who had been portemanteau du roi.

The three studies for or after Le Brun's *Triomphe d'Alexandre* in the Louvre may be by Verdier on the basis of the posthumous inventory of the sculptor François-Benoist Masson (1669–1728). They are strongly coloured and vigorously drawn. (A fourth sheet catalogued in Paris 1838–45 may have been an error or a subsequent loss.)

Bibliography

Beauvais 2000; Bellier de La Chavignerie & Auvray; Bénézit; Gareau 1992; Grove; Newton 2020, p. 5245; Rambaud 1965, I, pp. 228ff; Sanchez 2004; Washington 2009, pp. 70, 78f, 278; AN MC XIX/571, 22.II.1701

Pastels

J.753.101 Dix-huit têtes des *Batailles d'Alexandre*, a/r M. Le Brun, en pstl par M. Verdier, dans leurs bordures dorées et garnies de leurs veres blancs (François-Benoist Masson, sculpteur du roi, rue des Ortues; inv. p.m., 29.XII.1728, est. 100 livres ensemble). Lit.: Wildenstein 1967, p. 86

?among them:

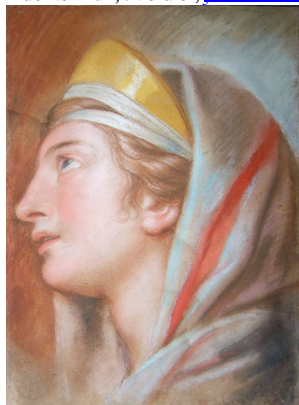
J.753.103 ~Tête d'Alexandre, pstl, 43x28.4 (Louvre inv. 29877. Acqu. 1828; Louvre inv. 1834, no. 27710, as by Charles Le Brun). Exh.: Paris 1838–45, no. 1093, as Le Brun. Lit.: Erkinger Schwarzenberg, "From the Alessandro Morente to the Alexandre Richelieu. The portraiture of Alexander the Great in seventeenth-century Italy and France", *Journal of the Warburg and Courtauld Institutes*, XXXII, 1969, pp. 398–405, pl. 68a, as Le Brun; Monnier 1972, no. 6, a/r Le Brun; Gareau 1992, repr.; Beauvais 2000, no. 1717; Salmon 2018, no. 6 repr., atlr de Le Brun, ?Verdier; [Jeffares 2018g](#) φα φ



J.753.105 ~Tête d'Alexandre, pstl, 40.9x27.4 (Louvre inv. 29878. Acqu. 1828; Louvre inv. 1834, no. 27711, as by Charles Le Brun). Exh.: Paris 1838–45, no. 1090, as Le Brun. Lit.: Reiset 1869, no. 844; Monnier 1972, no. 7, a/r Le Brun; Beauvais 2000, no. 1689; Salmon 2018, no. 7 repr., atlr de Le Brun, ?Verdier; [Jeffares 2018g](#) φασ



J.753.107 ~Tête de femme, pstl, 38x28.4 (Louvre inv. 29880. Acqu. 1828; Louvre inv. 1834, no. 27712, as by Charles Le Brun). Exh.: Paris 1838–45, no. 1091 or 1092, as Le Brun, tête de femme de la suite de Sysigambis. Lit.: Monnier 1972, no. 8, a/r Le Brun; Beauvais 2000, no. 1690; Salmon 2018, no. 8 repr., atlr de Le Brun, ?Verdier; [Jeffares 2018g](#) φασ



J.753.108 ~Tête de femme, pstl, 38x28.4 (Louvre inv. 1834, no. 27713, as by Charles Le Brun; lost c.1838). Exh.: Paris 1838–45, no. 1092 or 1091, as Le Brun, tête de femme de la suite de Sysigambis. Lit.: [Jeffares 2018g](#)