

Neil Jeffares, *Dictionary of pastellists before 1800*

Online edition

THRUMPTON, T.

fl. London 1662–73

Thrumpton, Thrumten or Thrumton; little is known about this pupil of Lely. The signed Ashmolean sheet, although widely described as a pastel, has only small touches of colour (as with his master's drawings), but the British Museum drawing dated 5 years later spreads the pastel more evenly. A Thomas Thrumpton, son of Thomas Thrumpton Jr, was christened in Wandsworth on 15.iii.1646 [new style]. Another Thomas Thrumpton, the son of John Thrumpton from Hull, Lincolnshire, was apprenticed as an upholsterer to in Bankside on 29.x.1661.

Bibliography

Bell 1915, pp. 6–8; Brown 1982; Croft-Murray & Hulton 1960; London 1987a; Waterhouse 1978; Woodward 1951

Portraits

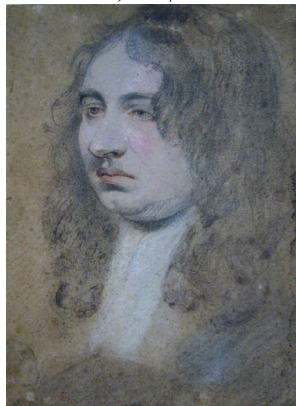
J.7146.101 MARIA Beatrice d'Este, Mary of Modena (1658–1718), pstl/ppr, 27.7x22.1, s “Trumpton fecit/Lely Pinxt.” (Dublin, NGI, inv. 6024. Colnaghi; acqu. 1903). Lit.: Le Harivel 1983, repr. A/r pnt. attr. Lely (Suffolk Collection, English Heritage) φ



J.7146.103 Young man, black, white chlk, pink pstl/buff ppr, 23.5x19, sd “T. Thrumpton feci/Londini 1667”; *verso*, a portrait of Mrs Carleton, née Mary Moders (c.1642–1673), bigamist and imposter, inscr. “Jarman Prinses” (Oxford, Ashmolean, inv. WA 1863.1034. Legs Francis Douce 1834). Exh.: London 1934a, no. 1119, no. 545 cat.; London 1938b, no. 130. Lit.: Bell 1915, frontispiece/pl. 1b; Woodward 1951, pl. 52/n.r.; Brown 1982, no. 221, pl. 125/126 φσ



J.7146.106 Unknown man, bl., white chlk, pstl/buff ppr, 22.9x16.6 (Oxford, Ashmolean, inv. WA 1934.424. Hope; acqu. 1934). Exh.: London 1938b, no. 132. Lit.: Woodward 1951, p. 52 n.r., possibly same hand; Brown 1982, no. 222 n.r., attr. φσ



J.7146.108 A clergyman, pstl, 25.5x19.5, sd ?“Thrumpton/.../16...?” (J. Isaacs 1951; T. E. Lowinsky; J. M. E. Lowinsky; London, Sotheby's, 22.xii.1965, Lot 119. Colin Hunter; London, Sotheby's, 11.vii.1991, Lot 24 repr., est. £1500–2000. Billingshurst, Bellmans, 22.i.2014, Lot 405 repr., est. £300–500. Samuel Gedge Ltd, cat. xviii, 2014, no. 113). Lit.: Woodward 1951, p. 52 n.r.; Brown 1982, p. 126, no. 221 φ



J.7146.11 Lady with a pearl necklace, crayons, black wash, pencil, 27.7x22.7, sd “Trumpton Fe/Londini 1672” (British Museum 1936.0072.1. E. Denney; acqu. 1916). Lit.: Croft-Murray & Hulton 1960, no. 1, pl. 261 φ

