

Neil Jeffares, *Dictionary of pastellists before 1800*

Online edition

SPINELLI, Chiara, principessa di Belmonte

Naples 1744–1823

Daughter of Troiano, 9. duca di Laurino, in 1762 she became the second wife of Don Antonio Francesco Pignatelli, principe di Belmonte (1722–1794), a grandee of Spain and prince of the Holy Roman Empire. She was the mistress of Ferdinando di Borbone. After her role in the revolution of 1799 she was exiled to France.

Bibliography

Berti 1979

Pastels

J.6904.101 AUTORITRATTO, pstl/ppr, 67x51 ov., sd r "Chiara Spinelli Principessa Belmonte F. Anno 1783" (Uffizi, inv. 1890, no. 2525, corridoio Vasariano. Don: Accademia di Belle Arti; Uffizi 1784). Lit.: Berti 1979, A906 repr. Φ

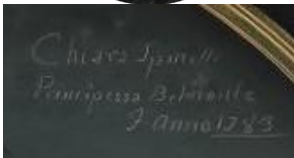


Photo su concessione del Ministero dei Beni e le Attività Culturali; reproduction forbidden