

# Neil Jeffares, *Dictionary of pastellists before 1800*

## Online edition

### SERGENT-MARCEAU, Antoine-Louis-François

Chartres 1751 – Nice 1847

The son of a soldier, Sergent studied with Augustin de Saint-Aubin in Paris from 1768 to 1771, returning to his native city. He married the sister of général Marceau in 1794: she was Marie-Jeanne-Louise-Françoise-Suzanne Marceau-Desgraviers (1753–1834), and in 1768 had married a M. Champion de Cernel: she engraved some of his work (notably for their *Galerie des grands hommes, des femmes illustres et sujets mémorables de l'histoire de France*, Paris, 1787–91) under various names including “Mme de Sernel” [sic] and using the anagrammatic pseudonym Émira. Sergent became a commissaire de police in Paris during the Revolution, and was later exiled. His brief artistic career included numerous engravings exhibited at the salons from 1793 to 1801. Among his subjects were pastels by Boze, Favart and La Tour.

#### Monographic exhibitions

Sergent-Marceau 1946: *Marceau et Sergent Marceau au musée de Chartres, à l'occasion du 150<sup>e</sup> anniversaire de la mort de Marceau*, Chartres, musée des Beaux-Arts, 22.IX.–3.XI.1946

#### Bibliography

Bellier de La Chavignerie & Auvray; Bénézit; Fahy 2005; Grove 2000; Herluisson & Leroy 1898; Michaud; N. Parfait, *Notice biographique sur Antoine-François Sergent*, Paris, 1848; Ratouis de Limay 1946; Sanchez 2004

#### Pastels

J.6718.101 Le général François de CHEVERT [(1695–1769)], cr., pstl, 14.4x12.5 (René Le Doux, château de Chiffrevast; vente succession, Paris, Beussant-Lefèvre, 23.X.2006, Lot 115 repr., est. €500–600)  $\phi$



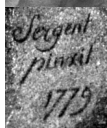
~grav. Ridé, *Portraits des grands hommes, femmes illustres*

J.6718.103 Henri-François des Herbiers, marquis de L'ESTENDUÈRE (1681–1750), commandeur de Saint-Louis, cr. clr (Grosvenor Prints 2018)  $\phi$



~grav.: Mme de Sernel pour Sergent, *Galerie des grands hommes, des femmes illustres et sujets mémorables de l'histoire de France*, Paris, 1787–91

J.6718.104 Mme SERGENT, dite Émira, née Marie Marceau-Desgraviers, puis Mme Champion de Cernel (1753–1834), pstl, 64x48, sd ↓ “Sergent/pinxit/1779” (Chartres, mBA, inv. D.127/1931. Le fils d'Agatophile Bertin d'Haussy, neveu du sujet, petit-fils de l'auteur. M. Chamberland; acqu. 1914). Exh.: Paris 1927a, no. 126, pl. XCIV-137; Paris 1933a, no. 144; Chartres 1939, no. 56; Marceau 1946, no. 102. Lit.: Ratouis de Limay 1946, pl. LXV/99; Cat. musée 1954, no. Aq. 28; Ananoff 1964, pp. 57f repr.  $\phi$



[larger image](#)

J.6718.107 Femme assise dans un paysage, portant une miniature, cr. noire, pstl, reh. blanc, 36.2x28.4, sd “Sergent/Marceau/del an/11” (Paris, Christie's, 18.III.2004, Lot 124 repr., est. €3–5000; Paris, Christie's, 29.VI.2005, Lot 310 repr., est. €500–700)  $\phi$