

**SAULCES DE FREYCINET,  
Mme de, née Élisabeth-Antoinette-  
Catherine Armand**

Crest 1756 – Montélimar 1841

Élisabeth Armand married the Montélimar merchant Pierre-Louis de Saulces de Freycinet (1751–1827) in 1776. Their distinguished family included two explorers and a member of the Académie française (the couple of this name formerly thought to be the subjects of pastels by Perronneau were probably Louis's uncle and his wife). It is not known if Mlle Armand continued working in pastel after her marriage, but the productions of this 15-year old show great promise. One is presumably of her father Claude Armand, who married Élisabeth Pommieu; the others no doubt of sisters or close relatives.

**Bibliography**

Chaix d'Est-Ange 1903; Marc Serge Rivière, *A woman of courage: the journal of Rose de Freycinet*, 2003

**Pastels**

J.6556.101 AUTO PORTRAIT, pstl, 61x52, 1772 (Valence, musée, inv. 949.29, Pas.2. Legs de Saulces de Freycinet 1946) Φ

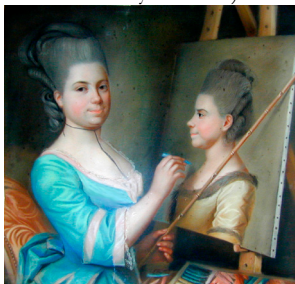


Photo courtesy musée des Beaux-Arts et d'Archéologie de Valence

J.6556.104 M. [Claude] ARMAND, pstl, 64x55, 1771 (Valence, musée, inv. 949.29, Pas.4. Legs de Saulces de Freycinet 1946) Φδ



Photo courtesy musée des Beaux-Arts et d'Archéologie de Valence

J.6556.107 Mlle Armand, plus tard Mme BONNET, pstl, 57x47 (Valence, musée, inv. 949.29, Pas.3. Legs de Saulces de Freycinet 1946) Φδ



Photo courtesy musée des Beaux-Arts et d'Archéologie de Valence

J.6556.109 Mlle DU CROZET et Mlle Armand, pstl, 63x53, 1771 (Valence, musée, inv. 949.29, Pas.1. Legs de Saulces de Freycinet 1946) Φδ



Photo courtesy musée des Beaux-Arts et d'Archéologie de Valence