

Neil Jeffares, *Dictionary of pastellists before 1800*

Online edition

RUSSELL, Anne

London 3.VIII.1781–7.VII.1857

Daughter of John Russell, whose pastels she copied as well as those of Rosalba Carriera. According to an annotation in Webb's Russell album, Anne, known as Nancy, "helped her father with his pictures and also in making the crayons". Russell's manuscript *Receipts for making crayons...* does include a great many observations she has added. Her brother William and sister Jane (*qq.v.*) were also pastellists, while her sister Maria worked chiefly in watercolour. The copy after Cotes comes from the Russell family collection and so may be by her, even though the cataloguer did not record the Cotes connection; it is of fairly poor quality. The attribution to her of a copy of her father's pastel of Mrs Higginson and her son appears to be without foundation; the original was on the Paris art market shortly before the copy appeared in the Haas sale in 1927.

Bibliography

Sée 1911; Whistler 2009, p. 201; Webb 1910; Williamson/Webb

GENEALOGIES [Russell](#)

Pastels

J.635.101 Lady Mary EYRE, née Radcliffe (1732–1798), pstl/ppr, 59.5x44 (desc.: H. F. Webb; Émile Gross; Xavier Haas, Paris; New York, Anderson Galleries, 20–21.I.1927, Lot 124 repr., unknown sitter New York, Anderson Galleries, 11–12.IV.1928, Lot 174 repr., \$60). A/r Cotes ϕ



Mrs HIGGINSON and child, v. a/r Russell

J.635.104 Master HOPE, with pet rabbit, pstl, 42x30.5 (London, Christie's, 5.VI.1925, as by Miss Russell, 5 gns; Lacey)

J.635.105 Anne (1800–1819) and Jane (1804–) SHURLOCK, as Sisterhood, pstl/buff ppr, 58.4x43.8, s v "Anne Russell" [c.1805] ([Pdesc.: Olive Shurlock Sjölander, Skara, Sweden, 1966]; Stockholm, Bukowskis, 16–17.II.2009, Lot 116 repr., follower of John Russell, est. SKr12–15,000. London, Christie's South Kensington, 9.VII.2009, Lot 634 repr., as by John Russell, ?of artist's daughters, est.£4–6000) [new attr., based on indistinct signature] ϕ σ



J.635.106 [=J.64.35835] Two young girls in white muslin frocks and lace caps, pstl, 39.5x46 ov. (Rev. T. Russell; London, Christie's, 25.VII.1913, Lot 6 n.r., as by John Russell, 260 gns; Colnaghi & Obach). Lit.: Williamson/Webb, as by Ann Russell, as two of the Shurlock girls

J.635.107 Ann SHURLOCK holding a basket of oranges, pstl. Lit.: Williamson/Webb p. 165; Webb 1910, repr. ϕ

J.635.108 Ann and Robert SHURLOCK as children, one asleep, pstl. Lit.: Webb 1910, repr. ϕ

J.635.109 Henrietta SHURLOCK carried by her nurse, holding a sheaf of corn, pstl. Lit.: Webb 1910, repr. ϕ

J.635.111 Henrietta West SHURLOCK (1810–), niece of the artist, "fancy picture", m/u (mentioned in codicil to Manwaring Shurlock's will, 2.IV.1898)

J.635.111 =?posing as Rosalba's Winter, holding flowers, pstl. Lit.: Webb 1910, repr. ϕ

J.635.112 Robert and Eliza SHURLOCK as children, playing with a hat, pstl. Lit.: Webb 1910, repr. ϕ

J.635.113 Le voyageur fatigué, 58x43 (Russell family 1911). Exh.: Paris 1911, no. 101

J.635.114 Girl holding a bunch of raisins, pstl, 46x32, 1811 (London, Sotheby's, 25.I.1988, £1045)

J.635.115 La petite paysanne, 60x44 (Russell family 1911). Exh.: Paris 1911, no. 102

J.635.116 Artist holding a crayon and a block, pstl, 45x39 (desc.: Rec. T. Russell, grandson of John Russell; London, Christie's, 25.VII.1913, Lot 4, 19 gns; Pearman)

J.635.117 Lady in white dress, holding a dog; & The waning Moon, pstl (desc.: Rec. T. Russell, grandson of John Russell; London, Christie's, 25.VII.1913, Lot 5, 5 gns; Pawsey & Payne)

J.635.118 Flore; & pendant: **J.635.119** Pomone, pstl, 58.5x46 (London, Christie's, 2.III.1971, 150 gns)

J.635.12 Three Seasons a/r Rosalba (Desc.: sister, Maria Russell (1783–1861); Legs: her nephew, Manwaring Shurlock), of which

J.635.121 ~Spring, pstl/ppr, 60x44 (Russell family 1911. Francis H. Webb 1894. Knoedler, as by John Russell. New York, Sotheby's, 7.XI.1985, Lot 3 repr., est. \$3–4000). Exh.: Paris 1911, no. 103. Lit.: Sée 1911, repr. p. 209 Φ



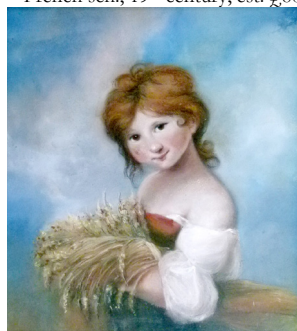
Photo courtesy Sotheby's

J.635.1221 [=J.64.3584] Two nymphs: Autumn; & pendant: **J.635.1222** [=J.64.3585] Winter, pstl, a/r Rosalba, 60x44.5 (Rev. T. Russell; London, Christie's, 25.VII.1913, Lot 9 n.r., as by John Russell, 70 gns; Asher Wertheimer). Lit.: Williamson/Webb, as by Ann Russell

J.635.123 La glaneuse, pstl, 41x35 (Knolleke 1911; London, Christie's, 31.V.1920, Lot 24 n.r., as by John Russell, 7 gns; Knowles). Exh.: Paris 1911, no. 104 ϕ



J.635.125 ~version, pstl, gch., 41.5x37.5 (Bristol, Clevedon Salerooms, 5.VI.2014, Lot 118 repr., est. £100–150. Binegar, Somerset, Mendip Auction Rooms, 12.XII.2020, Lot 341 repr., as French sch., 19th century, est. £80–120) ϕ β



J.635.127 The infant Samuel; & pendant: **J.635.128** Angels' heads, pstl, a/r Reynolds (desc.: Rec. T. Russell, grandson of John Russell; London, Christie's, 25.VII.1913, Lot 3, 5½ gns; Pawsey & Payne. =?W. A. L. Fletcher, DSO, of Sundorne Castle, Shrewsbury; London, Christie's, 15.V.1914, Lot 81 n.r., anon., m/u, 5½ gns; Cohen)