

# Neil Jeffares, *Dictionary of pastellists before 1800*

## Online edition

### REYNOLDS, Sir Joshua

Plympton 1723 – London 1792

Reynolds was a founder and first president of the Royal Academy of Arts in 1768. He was the pre-eminent British portraitist of his generation. Unlike his principal rival Gainsborough (*q.v.*) he does not seem to have worked in pastel, and his disapproval of the medium is well known, notably in his comments on Liotard (*q.v.*). Perhaps surprisingly Reynolds owned a number of pastels (*n.* Index of collectors), among them many sheets by Barocci and Lely which evidently influenced the study of his great-niece where the artist used black, white and red chalk with stump to achieve a very similar effect to pastel.

Reynolds's influence on copyists and followers (from Gardner and Read to amateurs such as Mrs Pickard, *qq.v.*) was immense. This has led to a certain number of errors (presumably those listed below) and confusions (e.g. a chalk self-portrait by Reynolds in the British Museum formerly attributed to John Astley, a fellow-pupil in Hudson's workshop in Rome in 1750, erroneously listed as a pastel).

#### Bibliography

Bénézit; Edinburgh 2008; Grove; Hallett 2014; Mannings 2000; McIntyre 2003; James Northcote, *Life of Reynolds*, 1819; Waterhouse 1941; Waterhouse 1981; Wright 2006

#### Monographic exhibitions

Reynolds 1980: *Reynolds*, Paris, Grand Palais, 9.X.–10.XII.1985; London, Royal Academy, 16.I.–31.III.1986. Cat. Nicholas Penny & al.

Reynolds 2005: *Sir Joshua Reynolds: the acquisition of genius*, Plymouth City Museum & Art Gallery, 21.XI.2009 – 21.II.2010. Cat. Donato Esposito & al.

#### Pastels

J.6174.101 Lady CATESBY, vue de profil à g., pstl/ppr br., 45x36, inscr. "Josua Reynolds 1780" (Eudoxe Marcille 1879). Exh.: Paris 1879, no. 672 n.r. [??]

J.6174.102 Mrs Robert Lowe, née Theophila GWATKIN (1782–1844), the artist's niece, red, white, black chlk, 45.8x3, c.1788 (British Museum, inv. 1902,0212.1). Study for Lesbia

J.6174.103 Emma SNYDE as a little girl, holding a puppy, chlks, 22x18 ov. (Sir Hugo Boothby, Bt, Fonmon Castle, Rhose, Glamorgan, 1757). Exh.: Cardiff 1948. Lit.: Steegman 1962, p. 99 n.r., traditional attr.

Marchioness TOWNSHEND (*comte Louis Caben d'Anvers 1908*). Exh.: Paris 1906a, no. 402; Paris 1908a, no. 104, n.r. Lit.: Williamson 1921, p. 91, as Gardner, *q.v.*

J.6174.105 Buste de femme, vue de ¾ à dr.; poitrine découverte, écharpe rouge brun sur les épaules, cheveux frisés tombant sur le front, pstl, cr. noir, 37.6x32 oct. (Diaz. Mme Charras 1879). Exh.: Paris 1879, no. 673 n.r. [??]

#### Anon. related pastels

J.6174.106 SELF-PORTRAIT in spectacles, crayons, 35.5x28 (Darrill; Christie's, 7.VII.1894, Lot 93, as autograph, 75 gns; Agnew)

J.6174.107 =?self-portrait in crayons [pchlk], 1799 (don: Mr Cribb, the artist's framer, framed with Reynolds's palette; London, Christie's, 1871, Lot 1, 200 gns; Mr Addington)

J.6174.108 ~cop., pstl, 35.5x31 (PC)

J.6174.109 SELF-PORTRAIT, pstl (Fritz Reiss 1906). Exh.: London 1906, upper gallery, no. 22 n.r., as autograph

Duchess of ARGYLL, née Elizabeth Gunning (1733–1790), pnt. (Port Sunlight). Lit.: Mannings 2000, no. 810

J.6174.11 ~cop., pstl, 61x47 (Morony; London, Sotheby's, 14.XII.1927, Lot 53 repr., as Cotes, £10; Keeling) [cf. Read] Φκ



Photo courtesy Sotheby's

Miss [Jane] BOWLES [later Mrs Richard Palmer (1772–1812)] holding a puppy, pnt. (Wallace Collection). Lit.: Mannings 2000, no. 231

J.6174.114 ~cop., pstl, 58.5x44.5 (Lord Ronald Gower, Hammerfield, Penshurst; London, Christie's, 28.I.1911, Lot 6, 46 gns; Amor)

J.6174.115 ~cop., pstl, a/r Reynolds, 61x51 (London, Sotheby's Olympia, 2.VII.2003, Lot 166 repr., with 3 other pastels) 56 Φκ



Photo courtesy Sotheby's

Mrs Wilson Gale BRADDYLL, née Jane Gale (– 1819), pnt. (Wallace Collection, inv. P47)

J.6174.119 ~cop., pstl, 53.5x38.5 ov., s & monogram G (London, Phillips, 9.VII.2001, Lot 73 repr., with another portrait undescribed, est. £800–1200) φπ



Viscountess CROSBIE, née Diana Sackville (1756–1814), pnt., 1777 (San Marino, Huntington Art Gallery). Lit.: Mannings 2000, no. 1564

J.6174.122 ~cop., pstl/ppr, 1798 (Hillsborough, North Carolina, Leland Little, 6–7.XII.2008, Lot 533 repr., est. £410–620) φ



Countess of DARLINGTON, née Lady Katherine Powlett (1766–1807), ∞ 3<sup>rd</sup> Earl, later 1<sup>st</sup> Duke of Cleveland, pnt. (Raby Castle)

~cop., pstl, v. J. R. Smith

William, 5<sup>th</sup> Duke of DEVONSHIRE (1748–1811)

~cop. W. Lane, *q.v.*

Georgiana, Duchess of DEVONSHIRE (1757–1806)

~cop. W. Lane, *q.v.*

Duchess of DEVONSHIRE, Lady Elisabeth Foster, née Hervey (1757–1824), pnt., 1787 (Chatsworth). Lit.: Mannings 2000, no. 668

J.6174.131 ~cop., pstl (Ickworth, National Trust, ICK/P/151) φκν



Lady Gertrude FITZPATRICK (1774–1841) with a bunch of grapes, pnt. (Port Sunlight). Lit.: Mannings 2000, no. 631, fig. 1242

J.6174.134 ~cop., crayons (Holland House 1820). Lit.: Thomas Faulkner, *History and antiquities of Kensington*, London, 1820, p. 111 n.r.

~cop. Samuel Cotes, *q.v.*

Charles James FOX (1749–1806), pnt., 1782 (Holkham). Lit.: Mannings 2000, no. 674; Ingamells 2004, p. 166f

~cop. Samuel Cotes, *q.v.*

~cop. William Lane, *q.v.*

David GARRICK (1717–1779) between Tragedy and Comedy, pnt., 1761 (Waddesdon). Lit.: Mannings 2000, no. 700, pl. 42

~cop., Daniel Dodd, *q.v.*

~Comedy, pnt. (PC 2000). Lit.: Mannings 2000, no. 702, fig. 532

J.6174.142 ~cop., pstl, 58.4x45.7 (Martin Sheepshanks, London, 1995). Lit.: Mannings 2000, no. 702a

Duchess of GORDON, née Jane Maxwell (1748–1812), with open ruff, pnt. (Goodwood). Lit.: Mannings 2000, no. 744

J.6174.144 ~cop., pstl, crayons, 28x21.5 (F. Gye 1868). Exh.: London 1868, no. 4, as by Reynolds

Alexander, 10<sup>th</sup> Duke of HAMILTON (1767–1852), pnt. (Edinburgh, NGS, inv. 2183). Lit.: Mannings 2000, no. 807

J.6174.146 ~cop., pstl (Chester, Bonhams, 16.VIII.2008, Lot 256 n.r., est. £80–120)

Lady HOLLAND, née Lady Mary Fitzpatrick (1746–1778), in pink dress and blue wrap, pnt., c.1768 (PC). Lit.: Mannings 2000, no. 681

J.6174.149 ~cop., pstl, 51x46 ov. (PC 2012). Attr. Gardner [?]; cf. Frances Reynolds]



Photo courtesy owner

J.6174.152 =? anon. pstl (R. Vernon Smith, MP) ~grav. S. Freeman for Walpole, *Letters*, ed. Cunningham, 1866, VI, repr. opp. p. 469

Dr Samuel JOHNSON (1709–1784), author, in a full wig and light brown coat, head, to l., looking up, to r., pnt. (London, NPG). Lit.: Mannings 2000, no. 1011

J.6174.155 ~cop., head, pstl (Lichfield, Samuel Johnson Birthplace Museum). Lit.: Graham A. Wilson, “Blinking Sam. The ocular afflictions of Dr Samuel Johnson”, *Archives of ophthalmology*, CXXII/9, 2004, pp. 1370ff repr. φ



Dr Samuel JOHNSON, in a full wig and light brown coat, ½ length, to left, almost profile, m/u [original not in Mannings]

~grav. F. Bartolozzi, for Johnson’s *Dictionary*, 7<sup>th</sup> ed., 1785

J.6174.159 ~cop., pstl (Lichfield, Samuel Johnson Birthplace Museum. Acqu. Birthplace Committee 1929). Lit.: *Boswell’s life of Johnson*, ed. George Birkbeck Norman Hill & al., 1950, IV, p. 457 n.r.; Percy Laithwaite, *Dr Samuel Johnson and his birthplace*, 1955, p. 24 repr., as Hoare [new attr.] φ

Angelica KAUFFMAN (1741–1807), holding a sketch of “Fame”, pnt., 75.6x62.8 (*olim* Althorp). Lit.: Mannings 2000, no. 1026, fig. 1251

~cop., pstl ( *Amsterdam, Christie’s*, 7.V.2013, Lot 148 repr., attr. Bartolozzi). v. Bartolozzi

Duchess of NORTHUMBERLAND, née Lady Elizabeth Percy (1716–1766), full length, pnt. (Syon)

J.6174.166 ~cop., pstl, 38x29 (Alnwick)

J.6174.167 Mrs Thomas ROBINSON, née Mary Elisabeth Darby (1758–1800), actress, waist length, with a muff, crayon, 32x23 (Daniel Parsons 1868). Exh.: London 1868, no. 6, as by Reynolds [?; cf. a/r Romney]

Mrs ROBINSON as Perdita, pnt. (Wallace Collection). Lit.: Mannings 2000, no. 1532

J.6174.169 ~version, cr. vlr/br. ppr, 15.2x12.5 (British Museum 1887.0722.19. W. J. Brooks; acqu. 1887). Exh.: London 1978, no. 91 φ



Charles Watson-Wentworth, 2<sup>nd</sup> Marquess of ROCKINGHAM (1730–1782), prime minister, FRS 1751, in the robes of a knight of the Garter, pnt.

~cop. Cotes, q.v.

Hon. Charles TOWNSHEND (1725–1767), chancellor of the exchequer, in a murray velvet robe over a yellow waistcoat, pnt., 72.4x60, c.1767 (PC). Lit.: Mannings 2000, no. 1760, fig. 1740

J.6174.174 ~cop., pstl (W. A. Twiston-Davies, Llangunville, Llanrothal, 1957, 1977). Exh.: Cotes 1971, no. 28 n.r. Lit.: Steegman 1962, p. 148 n.r., as Cotes; Johnson 1972, ?attr.; Kerslake 1977, II, pl. 802, attr.; Jeffares 2006, p. 139Bii, attr. Cotes. A/r Reynolds pnt. [?attr. Cotes; cf. Read; F. Reynolds] φκ



Mrs Philip WODEHOUSE, née Apollonia Nourse (–1817), in a white dress with gold flowers, pnt., c.1772 (London, Christie’s, 1.VI.1934, Lot 21). Lit.: Mannings 2000, no. 1921

J.6174.177 ~cop., pstl/ppr, 57x44.5 (London, Sotheby’s, 22.X.1981, Lot 84; Paula Peyraud; New York, Bloomsbury, 6.V.2009, Lot 90 repr., attr., est. \$4–6000, \$3000. Billingshurst, Bellmans, 6–8.IX.2016, Lot 1508 repr., attr. Catherine Read, with two copies of grav., est. £200–300) φκ



~grav. Charles Turner a.1823

The Infant Jupiter, pnt., Royal Academy 1774, no. 225 (Duke of Rutland). Lit.: Mannings 2000, no. 2098

~cop., Margaret Cunliffe, q.v.

J.6174.182 Samuel, crayons, a/r Reynolds (Turner; London, Christie’s, 21–23.V.1796, Lot 86, 5 gns; Edwards) [unclear if a/r Calling of Samuel or The Infant Samuel]

J.6174.183 Girl with a muff; & pendant: J.6174.184 The infant Samuel, pstl, 41x33 ov. (Earl of Hardwick; London, Christie’s, 27.VI.1924, as autograph, 21 gns; Yorke) [?attr.]

The Infant Samuel, pnt. (London, National Gallery, NG 162, dep.: Tate, inv. N00162. Acqu. 1828)

J.6174.186 ~cop. J. Wells Champney, pstl, 48x35.5 (New York, American Art Galleries, 21–22.I.1904, Lot 90 repr.)

*Infant Samuel & Angels’ head*, v. Ann Russell

J.6174.188 Lady in a red dress with blue sash, leaning on a pedestal, full length, pstl, 66x46 (Sir Edward Coates; London, Sotheby’s, 22.VI.1922, Lot 35 n.r., a/r Reynolds)

?Robinetta or Lesbia, pnt. (Tate). Lit.: Mannings 2000, no. 2146/2102.

J.6174.19 ~cop., with elements from both pnts., pstl, 77x63 (Earls of Stradbroke –1985; London, Sotheby’s, 30.XI.2000, Lot 194 repr., as Robinetta, circle of Russell, traditional attr. to Anna Maria Stradbroke, est. £2500–3500, b/i). Lit.: Jeffares 2006, p. 475B n.r. φπ



J.6174.192 ~cop. J. Wells Champney, pstl, 70x57 (New York, American Art Galleries, 21–22.I.1904, Lot 91 n.r.)

The age of innocence, pnt. (Tate). Lit.: Mannings 2000, no. 2008

J.6174.194 ~cop., pstl, 75x62 (Miss Agnew Laing, 25 Craven Hill, Bayswater; sale p.m., London, Christie’s, 5.II.1910, Lot 116, 2 ½ gns with another; Lister)

J.6174.195 ~cop., pstl, 63x49 (Cornwall PC 2000). Lit.: Mannings 2000, no. 2008f n.r.

J.6174.196 ~cop., pstl, 76x63 (London, Bonham’s, 7.X.1997, Lot 400). Lit.: Mannings 2000, no. 2008h n.r.

J.6174.197 ~cop., pstl, 73x60 (Edinburgh, Bonham’s, 24.X.2010, Lot 547 repr., est. £300–500, £137) φκ



The snake in the grass, pnt.

~cop., Gardner, Russell, qq.v.

J.6174.201 ~cop., pstl, 67x56 ov. (John Muir Hetherington, 19 Upper Grosvenor Street, London; sale p.m., London, Christie’s, 1.V.1908, 40 gns; Leggatt)

The laughing girl; & pendant: J.6174.203 the sleeping girl, pnt. Lit.: Mannings 2000, no. 2072/2077

~cop., Mrs Wright, q.v.

Boy holding a pen, pnt. (PC). Lit.: Mannings 2000, no. 2022, fig. 1584

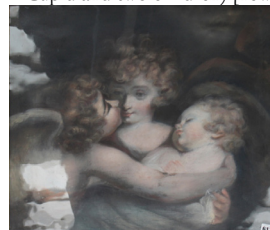
~grav. Keating 1784

J.6174.207 ~cop., pstl/green ppr, 31.2x26.2 (Austrian art market 1920s; Austrian PC 1971). Lit.: Mannings 2000, no. 2022c n.r., as thought by Waterhouse to resemble work of Daniel Gardner [?green ppr unusual for 18<sup>th</sup> century work]

Child with Guardian Angels, pnt., Royal Academy 1786 (Duke of Leeds; PC). Lit.: Mannings 2000, no. 2043, fig. 1746

~grav. Hodges 1786. Lit.: van der Feltz 1982, no. 610

J.6174.21 ~cop., pstl, 56x62 (Banbury, JS Fine Art, 28.III.2015, Lot 617 repr., as anon., of Cupid and two children) [new attr.] φκv



James, 2<sup>nd</sup> Earl Waldegrave, pnt., 76x63.5 (Walpole, gallery at Strawberry Hill visible in Thomas Sandby, Paul Sandby & Edward Edwards’ 1781 watercolour (repr. New

Haven 2009, no. 131). Exh.: New Haven  
2009, no. 139