

Neil Jeffares, *Dictionary of pastellists before 1800*

Online edition

RENI, Guido

Bologna 1575–1642

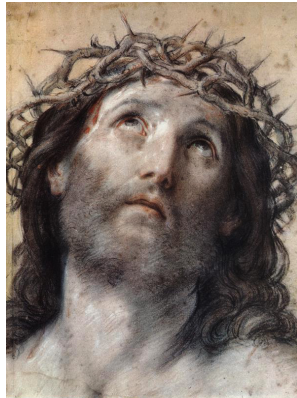
A prolific painter and draughtsman in Bologna and Rome. His drawings occasionally use coloured chalks, referred to as pastel (a determination which, as Monbeig Goguel notes, has not been achieved by advanced scientific analysis; a large number of further sale records, not listed below, refer to drawings in chalk “mêlée de pastel”); enthusiasm for these was reported by Malvasia (1616–1693); whose biography of Reni first appeared in *Felsina pittrice* in 1678. Baldinucci also relates how Reni undertook a copy of a medal with the profile of Bindo Altovito which he believed to be by Michelangelo: “Piacqueli tanto il bellissimo ritratto, che subito si applicò a disegnarlo in proporzione quanto il naturale, di matita nera e di pastello, e poi lo rappresentò il un quadro.” There are also a number of apparently autograph finished pastels, whose function is not completely clear; they seem not to be preparatory studies, nor does it seem likely that such fragile sheets were made for students to copy. Among his followers and pupils (he is said to have had over 200 in his workshop), Pietro Lauri (*q.v.*) is known to have used pastel, and may be responsible for some of the pastel versions. Many copies are however later, as Reni’s superstar status continued throughout the eighteenth century.

Bibliography

Baldinucci 1691–1728, IV, p. 29; Bénézit; Bowron 1980, p. 442; Brieger 1921; Henning & Marx 2007, pp. 13f; Lavallée 1947; Malvasia 1678; conte Carlo Cesare Malvasia, *The life of Guido Reni*, trans. C. & R. Engass, 1980; Meder 1919, p. 137; Monbeig Goguel 2009, pp. 34, 38; Pepper 1984; Richard E. Spear, *The “Divine” Guido*, New Haven, 1997

Pastels

- J.6156.101 Bindo ALTOVITO (1491–1557), Florentine noble and banker, chlk, pstl. Lit.: Baldinucci 1691–1728, IV, p. 29; Monbeig Goguel 2009, p. 34
Ecce Homo, pnt., 63x48, 1622–23 (Heim Gallery, London, 1978, no. 2; Canadian PC 1984). Lit.: Pepper 1984, no. 87, pl. 110
- J.6156.103 ~étude, pstl/ppr, 42x31 (Bologna, Pinacoteca Nazionale, inv. 452. P. ettore Ghislieri; sacristy of Madonna di Galiera, Bologna). Lit.: Migne 1855, p. 171, no. 142 n.r.; Pepper 1984, p. 246, *s.no.* 87, as autograph; Spear 1997, fig. 113; Monbeig Goguel 2009, p. 38 n.r., ?atelier ou cop. øß



J.6156.105 =?Une testa d’un cristo coronato fatto a pastello con un cristallo sopra cornice intag.ta e dorata alto p.i 3 (cardinale Ludovisi; inv. 2.XI.1623, no. 261). Lit.:Carolyn H. Wood, “The Ludovisi collection”, *Burlington magazine*, CXXXIV/1073, 1992, p. 522

J.6156.106 ~cop. Fleischman 1843, pstl, 45x34.5 (Donnington, Dreweatt’s, 12.XI.2013, Lot 404 repr.; London, Roseberys, 6.XII.2016, Lot 354 repr., est. £500–700; London, Chiswick Auctions, 11.I.2018, Lot 31; London, Roseberys, 18.VII.2018, Lot 7 repr., est. £300–500)

Ecce Homo, pnt., 62x48 ov, 1639–40 (Louvre). Lit.: Pepper 1984, no. 188, pl. 216

J.6156.108 ~cop., pstl (Rome, Galleria Pallavicini). Lit.: F. Zeri, *La Galleria Pallavicini in Roma*, Florence, 1959, no. 355; Pepper 1984, *s.no.* 188, cop.

J.6156.109 =?Ecce Homo, pstl, 51x39.5 (Rome, Palazzo Corsini, as autograph) øß



J.6156.111 ~?cop., pstl, 55x46 (Reims, mBA, inv. 828.1.9). Lit.: Adamczak 2011, p. 157, ??Nanteuil

~grav. Nanteuil, 1653. Lit.: Petitjean & Wickert 1925, no. 224; Adamczak 2011, no. 63

J.6156.113 Ecce Homo, ?third composition ~cop. Mengs, *q.v.*

J.6156.115 Der heilige Franziskus, cr. clr/ppr, 58x47 ov., c.1631 (Dresden P1. Modena; transferred to Dresden 1746). Lit.: Riedel & Wenzel 1765, p. 217, no. 261; Giuseppe Campori, *Gli artisti italiani e stranieri negli stati estensi*, Modena, 1855, p. 401 n.r.; Hübner 1856, no. 1929; Brieger 1921, p. 10 repr.; Posse 1929, p. 156 repr.; Pepper 1984, p. 265; Winkler 1989, pp. 188f; Dresden 1998a, pp. 37f, no. 8; Marx 2005, II, p. 638; Henning & Marx 2007, p. 13 repr.; Liotard 2018, p. 221

repr. Related altarpiece, pnt., 198x133, c.1631 (Naples, Chiesa dei Gerolamini) ø



~grav. G. Camerata

J.6156.118 Testa di un angelo coronato di spine, pstl (Gaspar de Haro y Guzmán, Conde-Duque de Olivares, Rome, inv. 7.IX.1682 – 1.I.1683)

J.6156.119 Testa di un Christo coronato di spine, pstl (Cardinale Ludovico Ludovisi, Rome, inv. 28.I.1633). Lit.: Pepper 1984, p. 246, as ?=Ecce Homo (Bologna), *v. supra*

J.6156.12 Head of the Capuchin Christ, pstl (Vigna Ludovisi). Lit.: Malvasia 1980, p. 148

J.6156.121 Testa di un Christo di pastelli, pstl (Costanzo Patrizi, Rome, inv. 27.II.1624)

J.6156.122 Testa di un Cristo coronato di spine, pstl (Gaspar de Haro y Guzmán, Conde-Duque de Olivares, Rome, inv. 7.IX.1682 – 1.I.1683)

J.6156.123 Testa d’un Ecce huomo, pstl (Filippo II Colonna, Rome, inv. 15.XII.1714 – 26.II.1716)

J.6156.124 Deux têtes de vieillards, pstl (Nourri, conseiller au grand conseil; Paris, Brusley, Folliot, 24.II.–14.III.1785, Lot 531 part, 20 livres; Remy)

J.6156.125 Tête de jeune homme, pstl (Paris, Mérault, Regnault Delalande, 15–19.III.1794, Lot 14 part, with Carriera, 30 livres)

J.6156.126 Testa di Madonna, pstl (Francesco Carlo Spinelli, principe di Tarsia, Naples, inv. .III.1732)

J.6156.127 Testa d’una Madonna, pstl (Filippo II Colonna, Rome, inv. 15.XII.1714 – 26.II.1716)

J.6156.128 Mezza figura, pstl (Marchese Marzio Ginetti, Rome, inv. 14.X.1707)

J.6156.129 Testa, pstl (Marchese Marzio Ginetti, Rome, inv. 14.X.1707)

J.6156.13 =?Elena; & Paride, due teste, pstl (Father-Superior Angelo Alberti, vice-general of the Congregation of Mantua; don: Cardinal Marzio Ginetti, protector of the congregation; Palazzo Ginetti a.1678). Lit.: Malvasia 1678, IV, p. 40; Lavallée 1947, p.91

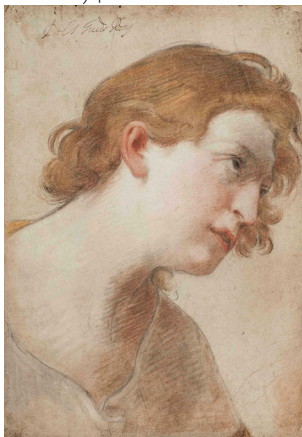
J.6156.131 Head, pstl (Carlo Maratti). Lit.: Malvasia 1980, p. 148

J.6156.132 Head, pstl (Mgr Ratta). Lit.: Malvasia 1980, p. 148

J.6156.133 Testa, pstl (Bartolomeo Barzi, Rome, inv. 29.XII.1645)

J.6156.134 Two heads of saints, pstl (John Law, inv. .VIII.1729). Lit.: Jolynn Edwards, “John Law and his painting collection: connoisseur or dupe?”, in Elise Goodman, *Art and culture in the eighteenth century*, 2001, pp. 59–75

- J.6156.135 Tête, pstl (Paris, Mariette, 10.IV.–13.V.1741, Lot 515 [part, MS addition to cat. ?Tessin]. Lit.: Py 2015, p. 315f)
- J.6156.136 Buste d'un enfant vu de profil, pstl (Jean de Jullienne; Paris, Martin, Remy, 30.III.–22.V.1767, Lot 425, with sanguine by Domenichino, 40 livres; Dumassot)
- J.6156.137 Tête d'ange, pstl (Nourri, conseiller au grand conseil; Paris, Brusley, Folliot, 24.II.–14.III.1785, Lot 530 part, 21 livres)
- J.6156.1371 Tête d'ange, pierre noire, sanguine, pstl/ppr, 42.5x29.5 (Marty de Cambiaire, Salon du dessin 2018). Étude pour L'Annonciation, pnt., c.1620 (Fano, S. Pietro in Valle) φσ

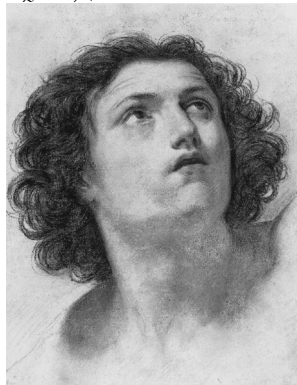


- J.6156.138 Deux études, pstl (Nourri, conseiller au grand conseil; Paris, Brusley, Folliot, 24.II.–14.III.1785, Lot 1129 part)
- J.6156.139 Testa di S. Francesco d'Assisi, pstl/ppr, 41x27 (Milan, Biblioteca Ambrosiano, 1907; not located 2009). Lit. *Guida sommaria*, 1907, no. 95 n.r.
- J.6156.14 Testa di monaco, pstl/ppr (Milan, Biblioteca Ambrosiano, 1907; not located 2009). Lit. *Guida sommaria*, 1907, no. 94 n.r.
- J.6156.141 Testa d'uomo, pstl, 35x25 (Milan, Biblioteca Ambrosiano, 1907; not located 2009). Lit. *Guida sommaria*, 1907, no. 92 n.r., attr.
- J.6156.142 Testa di donna, pstl, 35x25 (Milan, Biblioteca Ambrosiano, 1907; not located 2009). Lit. *Guida sommaria*, 1907, no. 93 n.r., attr.
- J.6156.143 Madonna, crayons (London, 1754, Lot 40, £1/17/-; Stephen Rongent)

Anon. related pastels

- Beatrice CENCI, pnt. (Rome, Palazzo Barberini). *Olim* attr. Guido Reni [v. Sirani]
- J.6156.146 Due Teste copiate dagli Innocenti, pstl, a/r Reni (conte Federico Beroaldi, cavaliere dei SS. Maurizio e Lazzaro, Bologna, inv. 15.I.1695)
- J.6156.147 Beata Vergine con bambino in braccio, pstl, a/r Reni (Contessa Zambecari, née Angelica Teresa Zanchini, Bologna, inv. 17.II.1783)
- J.6156.148 La Vierge regardant l'enfant Jesus endormi, pstl a/r le Guide (Cléret, Paris, 1763, date n/k, Lot 16 part, 6 livres)
- J.6156.149 Cléopâtre, pstl a/r le Guide (Paris, Chariot, Paillet, 30.VI.1779 & seq., Lot 102, 36 livres 13)
- J.6156.15 Tête de saint Michel, a/r pnt. (Rome, Capucins); & pendant: J.6156.151 femme drapée, grisaille pstl (Foulouse [not verified]. Cardinal de Bernis; cat. 1793, no. 47/48). Lit.: Roschach 1908, no. 634/635, attr. Mengs; Lamouzèle 1909

- J.6156.152 Virgin; & pendant: J.6156.153 Angel, crayons, a/r Reni (London, Christie's, 5–6.II.1796, Lot 30, £2/7/-)
- Saint Sebastian, pnt. Lit.: Pepper 1984, no. 155, pl. 181
- J.6156.155 ~head of a man looking upwards, turned to the right, black chlk, pstl, 43.8x33.2 (London, Christie's 5.VII.1988, Lot 80 repr., £2860; London, Christie's, 7.VII. 1992, Lot 188 repr., circle of Luti, est. £1000–1500, £2420) φκ



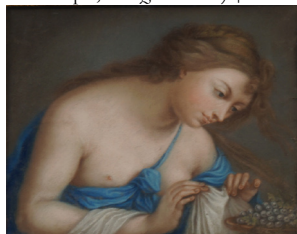
Allegory of Liberality and Modesty, pnt. (PC New York). Lit.: Pepper 1984, no. 172

- J.6156.158 ~cop. XIX^e, pstl/ppr, 80.5x52 (Gianni Versace, Villa Fontanelle, Lake Como; London, Sotheby's, 18.III.2009, Lot 448 repr., est. £2–3000) φκ



Erigone, pnt. Lit.: D. S. Pepper, "Erigone": a work restored...", *Burlington magazine*, CXXVIII/996, III.1986, fig. 30

- J.6156.161 ~cartoon (Kate Ganz, exh. 1989, no. 15)
- J.6156.162 ~cop., femme avec des raisins, pstl, 75x81 (London, Roseberry's, 10.V.2014, Lot 314 repr., est. £200–300) φκ



Strage degli innocenti, pnt., 1611 (Bologna, Pinacoteca nazionale)

- J.6156.165 ~cop., due teste (Federico Beroaldi, inv. p.m. 1695)
- J.6156.167 Silence, a head, in crayons, a/r Reni (London, 7.IV.1800, Lot 3, £1/11/-; Norman)
- J.6156.201 La Mère de douleurs, pstl (Vincent, de l'Institut; sa fille et beau-fils Maurice; vente p.m., Paris, Drouot, Delbergue-Cormont,

Gauthier, 25–29.VII.1871, Lot 12 n.r., école de Guide)