

Neil Jeffares, *Dictionary of pastellists before 1800*

Online edition

REMBRANDT van Rijn

Leiden 1606 – Amsterdam 1669

The painter was not a pastellist, but he inspired numerous artists (including Chardin; Coypel; Grimod; Hoin; Luttrell; J. H. Schmidt; Sinner; Tanfani, *qq.v.*, as well as the anonymes listed below) to make copies of his works.

Anon. related pastels

SELF-PORTRAIT in a cap, etching, 1639

~cop. *Luttrell, q.v.*

J.6152.101 ~?cop., pstl, 54.1x42.0 (Girault; Paris, Chariot, Joullain, 20.III.1776 & seq., Lot 54, 4 livres 10)

J.6152.102 Autoportrait, a/r REMBRANDT, coëffé d'une tocque & vû de face, de grandeur naturelle, 54x41.9 (Girault, Paris Chariot, Joullain, 20.III.1776 & seq., Lot 54, 4 livres 10 sols)

Tronie, ??Rembrandt's father, pnt. c.1631 (Mauritshuis, inv. 565)

J.6152.104 ~cop., pstl (Bath, Victoria Art Gallery, inv. BATVG PD 1995.7. PC London; acqu. 1995 as by William Hoare) [??attr.] φ

Jan RIJCKSEN, naval architect, and his wife Oriet Jans, pnt. (Royal Collection)

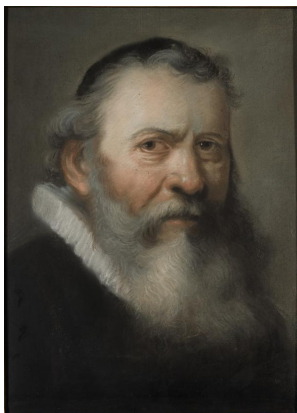
~grav. Charles Howard Hodges. Lit.: Rembrandt 1991, I, p. 107

J.6152.109 ~cop., pstl, 41x52, inscr. ✓ "Rembrandt/1667" (Paris, Drouot, Maigret, 23.III.2007, Lot 18 repr., attr. C. Troost, est. €600–800, withdrawn; Paris, Drouot, Maigret, 9.IV.2008, Lot 102 repr., attr. C. Troost, est. €600–800, €2900) φ



Pastor Eleazar SWALMIUS (1582–1652), pnt., 1637 (Antwerpen, Koninklijk Museum voor Schone Kunsten. Seger Tierens, 's Gravenhage, 1743. Duc d'Orléans, Palais-Royal, –1795. Duke of Buckingham, Stowe, 1848)

J.6152.112 ~cop., pstl/ppr, 44.7x32.8 (Stuttgart, Nagel, 27.VI.2007, Lot 367, circle of Thomas de Keyser, unknown sitter, est. €850; French PC 2008; Paris, Tajan, 17.XI.2008, Lot 90 repr., Éc. fr. XVIII^e, a/r maître hollandais XVII^e, est. €1500–2000, €1735) φ



J.6152.114 ~cop., pstl/ppr bl., 38.5x28.5 (Mayenne, Pascal Blouet 21.II.2016, Lot 27 repr., anon., inconnu, est. €300–400) [new identification] φ



~cop. *Coypel; Hoin, qq.v.*

Girl at a window, pnt., 1645 (Dulwich Picture Gallery)

~cop. *A. Grenville Scott, pstl, q.v.*

J.6152.119 Testa di ritratto, pstl, a/r Rembrandt (Cardinale Silvio Valenti Gonzaga, Rome, inv. 1760)

J.6152.12 Testa di ritratto, pstl, a/r Rembrandt (Cardinale Silvio Valenti Gonzaga, Rome, inv. 1760)

J.6152.121 Vieillard à mi-corps ayant une barbe longue, pstl dans le gout de Rembrandt, 51.4x43.2 (Claude-François Julliot; Paris, Le Brun, 3.VII.1795, Lot 61, H42; Hubert)

J.6152.122 Gentleman; & pendant: J.6152.123 head of a rabbi, pstls a/r Rembrandt (Earl of Sheffield; sale p.m., London, Christie's, 11.XII.1909, Lot 8, 5 ½ gns; Parsons)

J.6152.124 Head of a lady, profile to left, pstl, 40x30.5 (Alnwick) [cf. Luttrell]