

# Neil Jeffares, *Dictionary of pastellists before 1800*

## Online edition

### LAMBERT, George

England 1700 – London 1765

Landscape and portrait painter, said by Vertue to have taken up pastel around 1742: “lately...Lambert the Landskip painter has begun to do Landskips in Crayons, which are very pleasant and are takeing and may well meet with purchasers to his mind – done with less trouble & Study, than with Oyl Colours”. A handful of examples, dated between 1742 and 1746, are reported; they are in matching frames and seem to have come from the Morton collection.

#### Monographic exhibition

Lambert 1970: *George Lambert 1700–1765*, Kenwood, The Iveagh Bequest, 1970. Cat. Elizabeth Einberg

#### Bibliography

Einberg 2001; Oxford DNB; Schnackenburg 1995; Sloan 2000; Vertue; Wright 2006

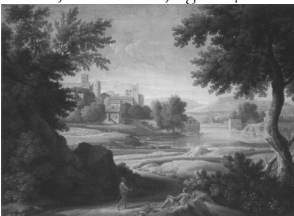
#### Pastels

J.4446.101 Gaspardesque lakeside landscape with shepherds, pstl/ppr, 48.3x63.5, sd ✓ “G.L. 1742” (?Dowager Countess of Morton, [née Susan Elizabeth Buller-Yarde-Buller (1793–1849)]; London, Christie’s, 27.IV.1850, Lot 96, 97 or 110; Cooke. English PC). Exh.: Lambert 1970, h.c.; Dughet 1980, no. 59 repr. Lit.: London 1992, fig. 4; Schnackenburg 1995, no. 103, fig. 97; Einberg 2001, no. P1742A, fig. 61 φ



~repetition of pnt., Einberg 2001, no. P1742

J.4446.104 Gaspardesque river landscape, pstl/ppr, 48.3x63.5 (?Dowager Countess of Morton; London, Christie’s, 27.IV.1850, Lot 96, 97 or 110; Cooke. Mr & Mrs A. J. Harry 1980). Exh.: Lambert 1970, h.c.; Dughet 1980, no. 60 repr. Lit.: London 1992, fig. 5; Schnackenburg 1995, no. 104, fig. 98; Einberg 2001, no. P1742B, fig. 62 φ



J.4446.106 Gaspardesque river landscape with drovers and sheep, pstl/ppr, 49.5x65.7, sd √ “G.L./1742” (?Dowager Countess of Morton; London, Christie’s, 27.IV.1850, Lot 96, 97 or 110; Cooke. Mr & Mrs A. J. Harry 1980; London, Christie’s, 14.VII.1987, Lot 137 repr.; Martyn Gregory; English PC; London, Sotheby’s, 14.VII.2010, Lot 59 repr.; Lowell Libson 2011). Exh.: Lambert 1970, h.c.; Dughet 1980, no. 59 repr. Lit.: London 1992,

fig. 5; Schnackenburg 1995, no. 105, fig. 99; Einberg 2001, no. P1742C, fig. 63 φσ



Photo courtesy Lowell Libson

J.4446.109 High Force or the falls of the River Tees, Durham, pstl/ppr, 48.8x64.7, sd “G.L. 1746/Bishop Durham” (Dowager Countess of Morton; London, Christie’s, 27.IV.1850, Lot 109, 2 gns; Cooke. R. G. Cave, c.1960. London, Christie’s, 12.XI.1991, Lot 7 repr., with another, framed as pendant, £6546; PC 2004). Exh.: Lambert 1970, no. 20; London 1992, pp. 9–11 repr. Lit.: Schnackenburg 1995, no. 106, fig. 100; Einberg 2001, no. P1746C, fig. 86; Oxford DNB, n.r. φ



~repl., pnt., 60x78, sd 1761 (Lowell Libson a.2012)

~pendant, classical river landscape, pstl a/r Claude (London, Christie’s, 12.XI.1991, Lot 7 repr.), v. Craig