

Neil Jeffares, *Dictionary of pastellists before 1800*

Online edition

JERVAS, Charles

Shinrone, Co. Offaly 1675 – London 2.XI.1739
Born in Ireland, Jervas studied under Kneller in London around 1695, and travelled to Rome in 1699 – presumably via Paris, since “Mr Prior’s head in Crayons, done at Paris 1699” is recorded in the catalogue of Matthew Prior’s collection. On his return to England in 1709 his oil portraits became fashionable. He moved in intellectual circles, leaving portraits of Swift and Pope. He also amassed a large collection of his own. On 14.I.1727 (as St Benet Paul’s Wharf, London) he married Penelope Hume, who Vertue tells us was a “gentlewoman” with “15 or 20” thousand pounds. She was living in Somerset House in 1743 when she made her will, proved 1746.

Pastel does not seem to have been a regular medium for this painter, although Vertue refers to his posthumous sale as including “many of his own Studies done at Rome etc. some few heads in Crayons black and white in large frames that were his chief studies.” The technique involves a good deal of black and red chalk as well as pastel, of limited and subdued tonality; the chalk outlines are accompanied by a graphic use of chalk hatching to effect modelling.

Bibliography

Bénézit; Crookshank & Glin 1994; Crookshank & Glin 2002; Figgis 2014; Figgis & Rooney 2001; Grove; Strickland 1913; Walpole 1828, p. 17f; Waterhouse 1981; Wright 2006

Pastels

J.4186.101 George Montague, 1st Earl of HALIFAX (a.1685–1739), head, pstl (Horton 1762). Lit.: Walpole 1928, p. 53, “a good head of the last Lord in crayons by Jarvis”; William Cole’s account of his tour with Walpole, repr. W. S. Lewis & Ralph S. Brown, *Horace Walpole’s correspondence*, London, 1941, x, p. 335, “head in crayons of the last Lord Halifax, by Jervas”

J.4186.102 Viscountess MALPAS, née Mary Walpole (c.1705–1731), pstl/pink ppr, 53.9x42 (Houghton). Lit.: Dukelskaya & Moore 2002, no. 218 repr.; Einberg 2016, fig. 59.1 φ



J.4186.104 Mrs Martin MADAN, née Judith Cowper (1702–1781), poet, cr. clr, 76x46, c.1723 (?Alexander Pope). Lit.: Falconer Madan, *The Madan family and Maddens in Ireland and England*, 1933, p. 97 n.r.

~cop. William Samuel Wright, pnt., 50x39 (Cooper and Newton Museum, inv. OLCN: 146. Don artist c.1907)

J.4186.106 Matthew PRIOR (1664–1721), poet and diplomat, head and shoulders to left, pstl, 39x31, 1699 (Welbeck. Prior; acqu. 2nd Earl of Oxford 1721, 10s.; Welbeck, Adrian Drift’s list, no. 78; cat. 1747, p. 34, no. 14; cat. 1861, no. 45; desc. Duke of Portland 1956). Exh.: London 1956, no. 578 n.r. Lit.: Goulding 1936, pp. xxxiii, 285, no. 854 n.r.; Ingamells 2009b, p. 229, as study for pnt., grav.: F. Engleheart; Adlam 2013, p. 36 repr. φ



?Duchess of QUEENSBERRY, née Catherine Hyde (1701–1777), 127x101, pnt. (London, NPG 238). Attr.

J.4186.109 ~version, ?study, pstl/ppr br., 35.1x28.7 (London, Courtauld Institute, D.1952.RW.3276. Sir Robert Clermont Witt; legs 1952). Lit.: Mack 1985, p. 584 repr.; Crookshank & Glin 1994, fig. 18; Ribeiro 2000, repr. clr φ



~cop. Mrs Delany, pnt. Lit.: Hayden 2005, p. 16 repr.

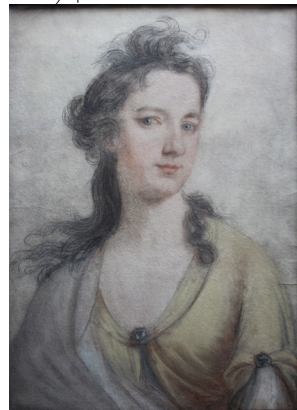
J.4186.112 Mrs John SELWYN, née Mary Farrington (1691–1777), pstl/ppr ([?Robert Marsham-Townshend 1900; Frogal, Chislehurst, Kent, Knight Frank Rutley, 7–23.VI.1915, Lot 49 n.r., unattr.]) PC 2011). Lit.: S. Parnell Kerr, *George Selwyn and the wits*, London, 1909, repr. opp. p. 16 [new attr.] φ



Photo courtesy owner

~grav. Heath 1798

J.4186.117 Lady wearing yellow, pstl, 54.5x42 (Duke of Northumberland, Syon House, inv. 251). φσ



J.4186.119 Lady as St Catherine, pstl, 54.5x42 (Duke of Northumberland, Syon House). φσ

