

# Neil Jeffares, *Dictionary of pastellists before 1800*

## Online edition

### GIBSON, Edward

Richmond 1657–1701

English draughtsman; member of the extensive family of miniaturists, which included Richard Gibson (*q.v.*, probably Edward's uncle), to whom many of the family's works were attributed. Buckeridge states that he "first painted portraits in oils; but afterwards finding more encouragement in crayons, his genius lying that way, he made a considerable progress therein, till death intervening put a stop to all his endeavours." According to Vertue, "Edward Gibson painter nephew to Will. Gibson limner, drew in crayons very well his own picture in crayons, one dres'd as a chinese another like a Quaker with a hat on"; the passage follows a mention of the Lely painting of Richard Gibson and his wife, and "at Mr Tho: Gibson" (Thomas Gibson (c.1680–1751), painter).

Records of Gibson's birth and death were first published in Jeffree 1980, and appear incorrectly in most sources. The œuvre itself also remains uncertain.

#### Bibliography

Buckeridge 1706; Croft-Murray & Hulton 1960, p. 337; Ingamells 2009b; R. Jeffree, "The Gibson family of artists", *Richmond history*, x, 1980, pp. 23ff; Pilkington 1852; Vertue I, p. 31; Woodward 1951

#### Pastels

J.347.101 SELF-PORTRAIT, pstl, 27x19.4, sd → "E Gibson/ fec' 1690" (London, NPG 1880. Tart Hall PC. Thane. Sir Thomas Lawrence. Francis Wellesley, cat. no. 250; London, Sotheby's, 28.VI.1920 & seq., Lot 382 repr. Don Francis Wellesley 1920). Exh.: Tulsa 1993, no. 10 repr. Lit.: Vertue v, p. 27; Walpole 1765–71; Foster 1914–16, p. 120; Woodward 1951, p. 37, pl. 58; Ingamells 2009b, p. 98 repr. Φσ

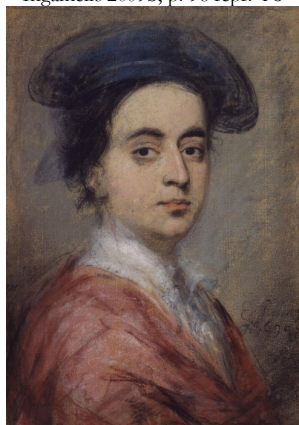


Photo courtesy National Portrait Gallery, London

J.347.104 =?SELF-PORTRAIT as a Quaker with a hat on, crayons (Thomas Gibson c.1705). Lit.: Vertue I, p. 31

J.347.105 SELF-PORTRAIT as a Chinese, crayons (Thomas Gibson c.1705). Lit.: Vertue I, p. 31  
Mr GEEKIE *Chirurg, cr. cl, 1698* (London, Sotheby's, 24.VII.1980, Lot 86. London, Christie's South Kensington, 1.VII.2004, Lot 12 repr., attr. Henrietta Johnson). Lit.: Ingamells 2009b, p. 98 n.r., as by Gibson [v. Geekie]

J.347.108 ?[??]Charles, 6<sup>th</sup> Duke of SOMERSET (1662–1748); & pendant: J.347.109 ?Duchess, née Lady Elizabeth Percy (1667–1722), dau. of Joceline, 11<sup>th</sup> Earl of Northumberland, pstl, c.25x20 [c.1710] (Syon House, Duke of Northumberland, inv. no. 328/329). Attr. [?] φαδσ

