

Neil Jeffares, *Dictionary of pastellists before 1800*

Online edition

DEGEORGE, Christophe-Thomas, dit Tomy

Blanzat 1786 – Clermont-Ferrand 1854

Before joining David's studio in Paris in 1802, the auvergnat history painter Degeorge studied initially (from as early as 1793) in Clermont in the school established by Gault de Saint-Germain, under whose guidance he made a small number of pastels which are probably typical productions of the various regional écoles de dessin which sprang up all over France in the last quarter of the eighteenth century. These works included portraits ("remarquable par la ressemblance et la correction du dessin", according to H. Conchon, 1855) as well as original history paintings and copies of old masters, sometimes in quite large formats.

Another monographic exhibition, to take place in the musée d'Art Roger Quillot, was announced in 2009.

Monographic exhibitions

Degeorge 1978: *Thomas Degeorge (1786–1854)*, Clermont-Ferrand, musée Bargoin, 28.X.1978 – 14.I.1979. Cat. Michèle Juillard

Bibliography

Bénézit; Saur

Pastels

J.2618.101 M. DEGEORGE, père de l'artiste, pstl, 60x49 ov., sd → "Degeorge P^{re}/an 8"; & pendant: J.2618.102 épouse, mère de l'artiste, pstl, 60x49 ov., sd ← "Degeorge P^{re}/an 8" (Clermont-Ferrand, musée d'Art Roger-Quilliot, inv. 56-251-1. Don Mme de Féligonde 1923). Exh.: Degeorge 1978, no. 6 repr. Φ



Photos courtesy musée d'art Roger-Quilliot, Ville de Clermont-Ferrand

J.2618.106 Fillette, en buste, portant un turban et un manteau garni de fourrure, pstl/ppr,

43.4x36.7, sd "Degeorge px 1814" (London, Christie's South Kensington, 12.XII.1996, Lot 212 repr., est. £1500–2000, £2600 [=£2990]) Φ



J.2618.108 Loth et ses filles, pstl, 33.5x42.5, inscr. verso "Fait par degeorge âgé de 11 et demi an 6" [1798] (Clermont-Ferrand, musée d'Art Roger-Quilliot, inv. 2422. Legs Degeorge 1875). Exh.: Degeorge 1978, no. 1 repr. Φ



Photo courtesy musée d'art Roger-Quilliot, Ville de Clermont-Ferrand

J.2618.111 Job sur son fumier, pstl, 33x42.5, inscr. verso "Fait par Degeorge an 6" [1798] (Clermont-Ferrand, musée d'Art Roger-Quilliot, inv. 2450. Legs Degeorge 1875). Exh.: Degeorge 1978, no. 2 repr. Φ

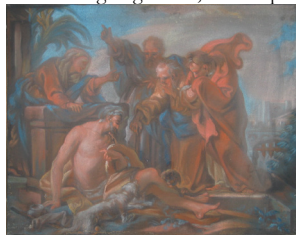


Photo courtesy musée d'art Roger-Quilliot, Ville de Clermont-Ferrand

J.2618.114 Ange de l'Annonciation, pstl, 66.5x60 (Clermont-Ferrand, musée d'Art Roger-Quilliot, inv. 2414. Legs Degeorge 1875). Exh.: Degeorge 1978, no. 4 repr. A/r Philippe de Champagne pnt. (musée Bargoin) Φ

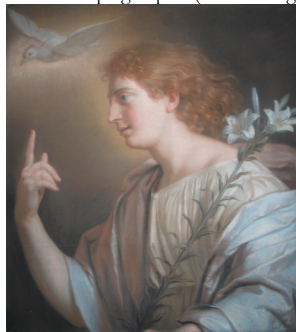


Photo courtesy musée d'art Roger-Quilliot, Ville de Clermont-Ferrand

J.2618.117 Caïn tuant Abel, pstl, 93x68 (Clermont-Ferrand, musée d'Art Roger-Quilliot, inv. 2463. Legs Degeorge 1875). Exh.: Degeorge 1978, no. 5 repr. A/r pnt., attr. Lemoyne & Trevisani Φ



Photo courtesy musée d'art Roger-Quilliot, Ville de Clermont-Ferrand