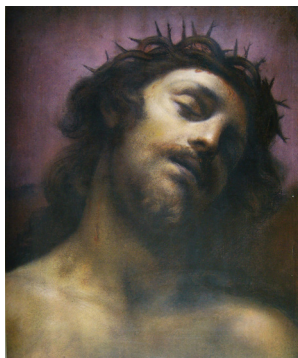


Neil Jeffares, *Dictionary of pastellists before 1800*

Online edition

CIGOLI, Lodovico Cardi da

Castelvecchio 21.IX.1559 – Rome 8.VI.1613
Religious painter and draughtsman; pupil of Alessandro Allori; he taught Domenico Fetti. He was known for his strong sense of colour and light and shade. It is said that he made preparatory sketches in pastel towards the end of his career when he was working on the Loggia of the Borghese palace. Monbeig Goguel notes that he was influenced by Barocci (*q.v.*) but the example cited, a *Psyché endormie* (Louvre, inv. 914), does not seem to be in pastel. A pastel male head in the Uffizi is probably earlier, as it seems stylistically close to his Last Supper of 1591 (Empoli) and Madonna del Rosario of 1595 (Pontadera). Loisel also notes that the head of Christ in the Corsini, “véritable chef d’œuvre dans la virtuosité de l’usage de la technique alliée à une puissante expressivité dramatique”, was inspired by Guido Reni. Baldinucci commented “tutti colore che o uscirono poi dalla scuola del Cigoli, o furono suoi compagni di studi, o suoi imitatori, usarono operare di pastelli.” Among these pupils or followers were Francesco Curradi and Giovanni Battista Vanni (*q.v.*). Loisel has reattributed to Correggio a pastel formerly attributed to Cigoli.



Santa Lucia (Florence, Uffizi). Study for altarpiece at Cortona, v. Carracci

Tête de femme (Louvre, inv. 2905). Lit.: Contini 1995, p. 174 n.r., attr., v. Curradi

Tête de femme (Louvre, inv. 2906). Lit.: Contini 1995, p. 174 repr., attr. Cigoli, v. Curradi

Monographic exhibition

Cigoli 1992a: *Lodovico Cigoli, 1559–1613 tra manierismo e barocco. Dipinti*, Florence, Galleria Palatina di Palazzo Pitti, 19.VII.–18.X.1992. Cat. Marco Chiarini & al.

Cigoli 1992b: *Disegni di Lodovico Cigoli, (1559–1613)*, Florence, Uffizi, 1992. Cat. Miles L. Chappell

Bibliography

Baldinucci 1691–1728, III, p. 663; Bénézit; Contini 1995; Monbeig Goguel 2009, p. 34; Loisel 2008

Pastels

J.227.101 Tête d’homme de profil (Uffizi, inv. 2027S). Lit.: Loisel 2008, fig. 4 φ



J.227.103 Testa del Cristo morto, pstl, 47x40 (Florence, Palazzo Corsini, inv. 90). Exh.: Cigoli 1992, no. 4. Lit.: Susan & Joanna Horner, *Walks in Florence*, 1877, p. 513 n.r.; Vaccari & Hebblethwaite 1987; Loisel 2008, n.r. Study for the altarpiece in Santa Croce φ