

Neil Jeffares, *Dictionary of pastellists before 1800*

Online edition

BLYTH, Samuel

Salem, Massachusetts 1744–1795

Heraldic and commercial painter as well as maker of harpsichords and spinets; older brother of Benjamin Blyth (*q.v.*). He married twice: in 1767 to Lucy Cleveland; and in 1787, to Sally Rolland, who survived him; four children are recorded. In 1774, he painted the Governor's pew in St Peter's Church, Salem, and was also paid as organist (the instrument had been made by Thomas Johnston, *q.v.*); he also announced plans for a boarding school for girls. A few pastels have been attributed to him rather than his brother, perhaps simply because they are not good enough to be by Benjamin; but more recently (Norton 1995) it has been suggested that Samuel took over responsibility for portraiture after Benjamin's abrupt departure from Salem, perhaps c.1782.

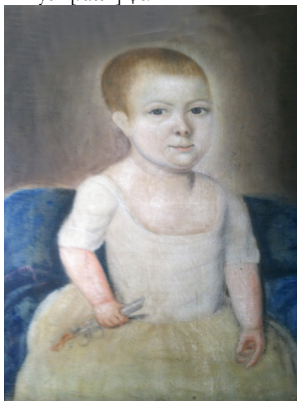
Bibliography

Foote 1957; Norton 1995; Bettina A. Norton, private communication, 2015

Pastels

J.1602.101 Governor John ENDECOTT (c.1588–1665), m/u, inscr. “Copied by Samuel Blythe about 1783”, a/r pnt. c.1665 (William C. Endicott a.1957). Lit.: Foote 1957, p. 79 n.r.

J.1602.102 Mrs Henry WHITE, née Elizabeth Safford (1781–1812), as a small child, pstl/ppr, 50.8x36, c.1781 (Salem, Peabody Essex Museum, 124,689. Acqu. 1941). Lit.: Foote 1957, p. 79 n.r., as of Elizabeth Stafford by ?Benjamin or Samuel *Olim* attr. Benjamin Blyth [?attr.] φα



J.1602.104 Man, in light blue coat, waistcoat, white stock, pstl/ppr, 55x41.4, c.1770–90 (Salem, Peabody Essex Museum, 108,312). Lit.: Foote 1957, p. 79 n.r., attr.